

In This Edition:

- * Captain's Log
- * News from the Helm
- * Wharves & Jetties
- * What's Happening in Our Bays
- * Membership Report
- * New TIBC Website
- * Safety at Sea
- * RCG in Tennyson Inlet
- * TIBC Merchandise for Sale
- * Events Calendar
- * Children's Corner

Captain's Log

Greetings from the Bridge.

What a winter. The persistent wet weather and especially the recent major deluges have inflicted an enormous amount of damage on the upper South Island and the Marlborough region. The road access to our Bays has been severely damaged and full reinstatement will take time. It was great to see our residents supporting one another with clearing of debris, property checks for absent landowners, and grocery deliveries for those that have been isolated. The amount of debris washed down the creeks and rivers into the Sounds could pose a navigation hazard going forward, especially when spring tides occur, so be vigilant when boating in the coming months.

The catwalk adjacent to the Duncan Bay launching ramp has suffered some damage at the seaward end during recent bad weather. The final section of the structure has been cordoned off until repairs can be actioned. Because of this damage and other deterioration of the structure the Committee is looking at options available for an upgrade to the catwalk. Unfortunately, any major renovations or replacement will take time due to funding applications and engineering advice.

The swim platform at Duncan Bay had also broken loose from its mooring and was retrieved by Jesse Fenton. Scott Archer has kindly offered to reattach it to its mooring block.

Last summer we had problems with jet skiers ignoring the 5 knot rules and excessive speed close to the shore and moored boats, especially in Penzance and Tuna Bay. We have been in touch with the Harbourmaster regarding improved signage, more policing of our area by the Harbourmaster, and also having the 5 knot buoys in Penzance moved further out from their present location. The 5 knot restriction applies out to 200 metres from the shoreline.

The Scallop Fishery is also to remain closed again this year, plus a reminder that the ban on catching Blue Cod is now in place till December 20th. Please take care when returning any cod accidentally caught back into the water. Ideally, handle gently using a wet rag and keep handling time to a minimum. It is recommended to use larger hooks (at least size 6/0) so there is less chance of them being swallowed. If cod are being caught then move locations and target other species. An encouraging sign last summer were the number of schools of snapper and gurnard that were present in Tennyson Inlet. Hopefully they will return this year and help take the pressure off the cod fishery.

Here's hoping for a dramatic improvement in the weather going into Spring.

Keep smiling – Tennyson Inlet is still a wonderful place.

Safe Boating,
Roger Smith,
Commodore.

Club Contact Details



Mailing address:

PO Box 39
Rai Valley 7145

Email addresses:

| | | |
|---------------------------|--|--|
| Commodore: | Roger Smith | hebelch@xtra.co.nz |
| Vice Commodore: | Richard Smedley | smedley@xtra.co.nz |
| Immediate Past Commodore: | Mike Neale | penzance@xtra.co.nz |
| Treasurer: | Dave Wade | tennyson.treasurer@gmail.com |
| Secretary: | Libby Archer | tennyson.secretary@gmail.com |
| Membership Officer: | Leanne Schimdt | nowonplanb@gmail.com |
| Newsletter Editor: | Chris Siale | tennyson.editor@gmail.com |
| Committee Members: | Peter Boyd, Caro Bartlett, Peter Barnett, Jesse Fenton, Scott Archer | |



**DUNLEA
BUILDING LTD**

Building the future. Renovating the past.



New Homes—Alterations—Bathrooms—Decks—Light Commercial

Give Brent a
call on:
03 5441295 or
021 2843883

** Trade qualified and building in Nelson for over 25 years*
** Free Quotes*
** From plan stage to landscaping*
** Many repeat clients happy to talk to you about our workmanship and professionalism*

Email: info@dunleabuilding.co.nz

News from the Helm

A summary of matters arising from the TIBC Committee meeting held on the 13th August 2022

Financial Report:

Dave Wade tabled the Financial Statement for the year to date ended 31st July 2022. Year to date Income is \$13,663 which is down \$2,797 (-19%) on the same period last year. The main variances were: Picnic Day income down \$3589; Advertising Income is down \$350; Membership income is up \$445; Merchandise income is up \$689 and Donations are down \$94 on last year.

Total YTD Gross profit is \$12,894 compared with \$14,184 last year.

Total YTD expenses are \$7,278 which is \$1,946 lower compared than last year. The main variances here are: Swimming Lesson Sponsorship -\$695; Fishing Competition -\$417; Ramps and Jetties -\$2,342 and Sundry Expenses +\$1,878 (Website design).

The cash position remains strong at the end of July 2022 with a total of \$128,576 in cash across the various club accounts compared to \$123,968 at same time last year.

The YTD surplus is \$5,616 compared with \$4,959 the same period last year. This is quite a good result considering no income from Picnic Day in 2022.

Total assets at end of July 2022 are \$131,573 compared with \$126,812 (+ 4%) at the end of July 2021.

Liabilities at the end of July 2022 are \$890 which are accrued Member Rescue Helicopter donations.

Net assets of the club at the end of July 2022 are \$130,693 v's \$125,002 (+ 5%) at the end of July 2021.

Membership:

156 General/Paid up memberships
 12 Membership accounts owing
 4 Honorary Life Memberships
 1 Financial Life Membership

173 TOTAL MEMBERS

Health & Safety:

Reports tabled on Penzance slipway and wharf facilities.

Recent damage to the seaward end of the catwalk at Duncan Bay. End section is to be cordoned off until repairs can be undertaken. Discussion on plan of action to upgrade or replace the catwalk. Roger and Richard to talk to the Harbourmaster and Council.

General Business:

Newsletter: Discussion on content and format. Chris Siale wants all material by 2nd September 2022.

Jet Skis: Follow up to be made with Harbourmaster re signage, relocation of the Penzance 5 knot buoys and policing.

Incorporated Societies Legislation: Mike Neal raised the issue of the new legislation which has implications for the Boat Club. Mike is to research and update the committee at our next meeting re any actions required. We have two and a half years to be compliant.

Christmas Committee Meeting: Discussion on format and venue. Roger to approach Beryl and John re chartering *Blue Safari* again on Saturday 3rd of December for the meeting and a meal at Te Rawa.

Next meeting date: Saturday 15th October.





VEGE BOX DELIVERIES TO RAI VALLEY

Okiwi Market Gardens delivers seasonal Vege Box orders to Rai Valley every Friday afternoon.

Collect from either the OMG Vege Locker at Miller's Rest Tavern or Pelorus Café.

Freshly harvested, greenhouse grown in Okiwi Bay. Image shown is a typical \$25 box or bag.

For more details visit www.omg.co.nz or follow us on social media...




BAR & RESTAURANT

03 651 0050

BOTTLE STORE

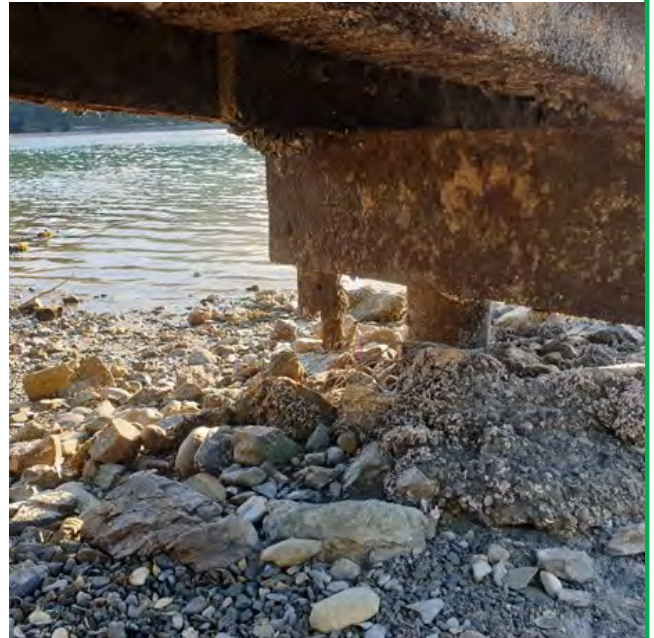
VENUE HIRE

 [themillersrest](https://www.instagram.com/themillersrest)

Wharves & Jetties

Duncan Bay Catwalk

The following are a series of photographs showing damage and deterioration to the Duncan Bay catwalk.



The Committee are investigating our options for repairing or replacing the catwalk. In the interim the end section has been cordoned off due to its present state but the inshore sections are still usable.

Wharves & Jetties

• Donations to the TIBC are up 50% on last year, including online banking, donation boxes, and penguins.
 • We really appreciate your support!



Tennyson Inlet Boat Club

Did you know?
 These facilities are owned and maintained by the
 Tennyson Inlet Boat Club,
 & we need your
 support!



Harcourts

Sarah Archer

Sounds Specialist

M 027 362 8985 P 03 548 3034

E sarah.archer@harcourts.co.nz

Platinum Blue Limited Licensed Agent REA 2008

227 Hardy Street, PO Box 192,
Nelson 7010, New Zealand

www.harcourts.co.nz



‘Your Local Agent’

List and sell your property exclusively with me and I will donate \$500 in your name to Tennyson Inlet Boat Club, or an organisation of your choice.

What's Happening in Our Bays

⚠️ There are many roadwork sites on our local roads, especially Ronga rd to Okiwi and Opouri rd to Tennyson.

Please respect they are still closed to the general public to allow the crews to get these sites cleared as fast as possible ⚠️

🚧 ⚠️ Residents only please ⚠️ 🚧



Please be aware that the Duncan Bay Road towards the boat ramp has a large slip, which resulted from the recent August rain event.



Link to 16th Sept 2022 webinar on the status of Sounds roads:

<https://www.marlborough.govt.nz/civil-defence-emergency-management/august-storm-event-2022/general-recovery-information-august-2022-storm-event/community-meetings?fbclid=IwAR2nTDUqyOJpvx-1nK9kHTZkTEeLNC3C6AcGmoBYe9PuvvcoJPMjrHNvK5M>

The map of road status is here:

<https://marlborough.maps.arcgis.com/apps/webappviewer/index.html?id=7de480b8bfa541e0a73719bfc893c41d>

Tennyson Inlet is not a priority road, fix circa 2023 depending on funding.

A very useful app for weather warnings and local road closures.

<https://www.marlborough.govt.nz/services/apps/antenna>

What's Happening in Our Bays

Jake Oliver, Harbour Master,
Marlborough District Council has some
advice for our members while boating in
the Sounds:



Please keep a sharp look out for trees and other debris in the water post the recent flooding event. This issue may increase as the region experiences a round of higher tides which may contribute to material floating off the edges of slips. It is best to stay away from areas which have slipped and deposited material in the water.

To report concerns please call the Council on 03 520 7400 and ask for one of the Nautical & Coastal Team.

To send photos please email harbours@marlborough.govt.nz



Marlborough Cruise Guide App

The Harbourmaster publishes local navigation warnings to provide harbour users with information about any local matters that may effect the safety of navigation in the region. These warnings are also broadcast on local marine radio stations and published Marlborough Cruise Guide. Enabling notifications on the free Marlborough Cruise Guide App is a great way to keep up to date with local navigation warnings.





Need a ride to/from your bach or home*, supplies delivered*, a group fishing charter or a jetty water blasted/cleaned up for summer?

We offer services to/from Havelock, Penzance, Duncan and Elaine Bays

Each trip means a \$5 donation to the Tennyson Inlet Boat Club

(to help maintain their wharves, ramps and catwalk)

**This is also subsidised by MDC under the flood recovery phase, which may mean you pay little or nothing depending on the travel time.*

For bookings or a quote contact Jesse Fenton on:

Phone (03) 576 5691, (021) 209 6554 or email Jesserebel3@gmail.com

Boat For Sale

19ft *Sea Nymph* Sea Rider fibreglass hull on single axle Mudgeway trailer

- 150hp Yamaha V6 2 stroke outboard with only 153 hrs use
- 7.5 hp Mercury auxiliary 2 stroke
- Auto anchor
- Marine ship-to-shore
- Ski pole, skis and rope
- Bait board
- Humminbird fish finder and GPS
- And many other extras

All in excellent condition

\$33,500

Contact Chris
027 437 7630



Membership Report

A very warm welcome to the below new members:

- Neville Cardiff
- Kevin & Diana Cudby
- Nick Young

We also farewell long-time members, the Clenshaw family.

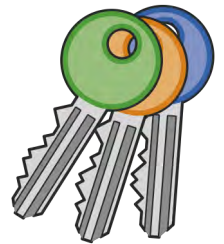
**As a reminder, the club does not send out membership receipts unless requested.
Please let me know if you need one.**

Thank you for your support.

Leanne Schmidt

P: 03 576 5111 / 027 445 2669

E: nowonplanb@gmail.com



Found near Duncan Bay ramp – 2 keys. Contact Leanne if you're missing some.

AED & Epipens in Tennyson Inlet

Duncan Bay: 190 Duncan Bay Road (corner Duncan Bay Road & Matai Street)

Penzance Bay: Epipen @ 3220 Archers Road. AED @ 3160 Archers Road.





NELSON
MARLBOROUGH
WASTE



Liquid Waste Management Solutions

Septic Tanks & Wastewater Emptying

Water Wells

Sumps

Interceptors

Grease Traps

Winery Waste

Waste Oil Collections



Give us a Freecall

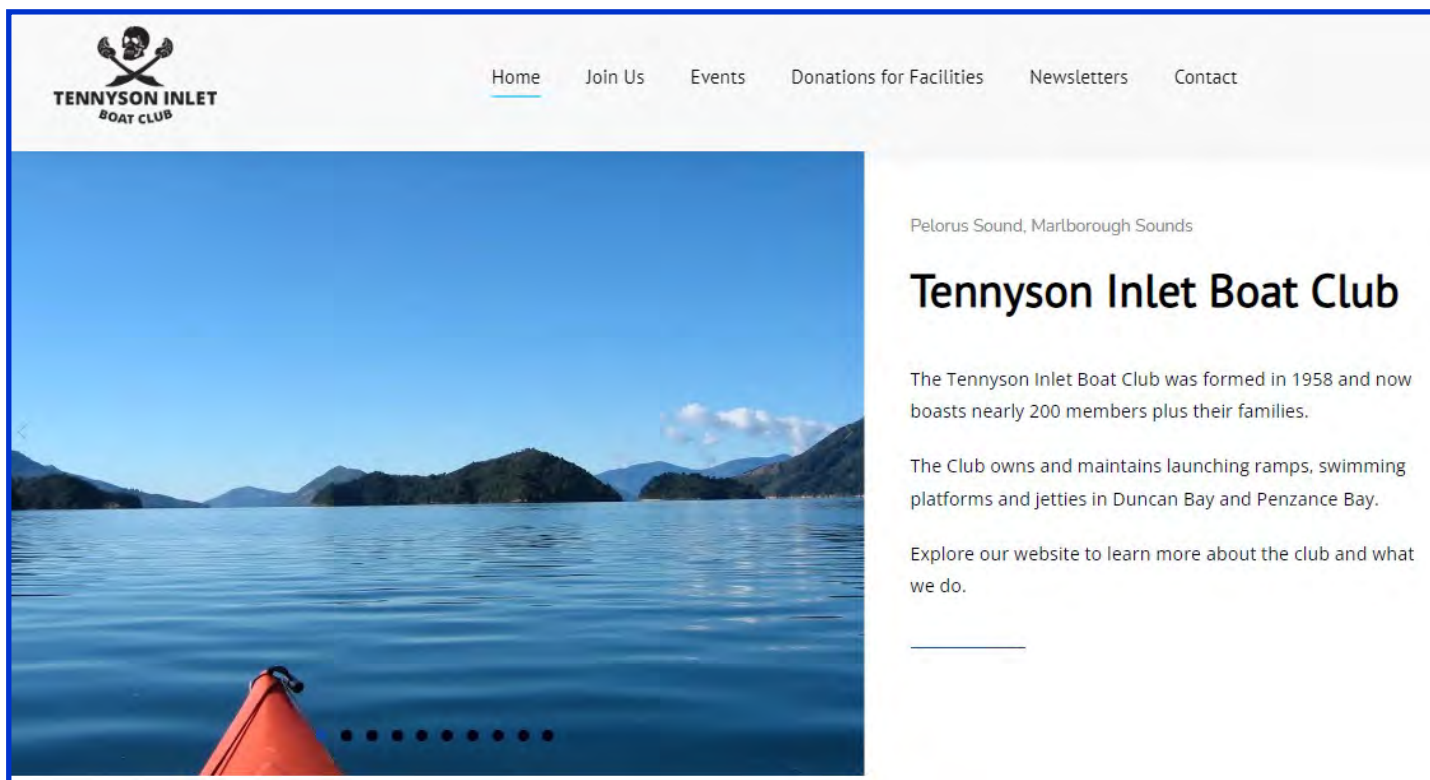
0800 725 326

Visit our Website

www.nmwaste.co.nz

Keeping our homes, businesses & public places **clean & safe.**

TIBC New Website



New website www.tibc.org.nz

TIBC are currently in the process of developing a brand-new dedicated website. It will be a work in progress as we are volunteers and chipping away as we can.

For many years now the club has been hosted as a part of Pelorus People website as a subsite with many other community groups. Recently the committee decided it was time to further develop a dedicated TIBC website. The new website can still be accessed via Pelorus People.

Coming soon with new features such as:

- New layout – improved professional appearance and more intuitive navigation for users
- Members only area – watch this space!
- More photos from our events and results
- A history section explaining how the club and the facilities came about
- Acknowledgement of our life members and their contributions

All ideas are welcomed, if you have any suggestions, please contact Libby on 021 450205, via our FB messenger or email to tennyson.secretary@gmail.com



Receiving Your Newsletter by Mail

Historically we have given our members the option of receiving newsletters by mail. This can be handy for the coffee table.

Moving forward, if you get your newsletter by mail and have an email address we are adding an additional annual fee that represents actual costs of printing and mailing the newsletter, being \$5 per issue, for 4 issues per year (\$20). This is for envelopes, postage & printing.

Leanne nowonplanb@gmail.com or phone (03) 576 5111



What's in the Shed...

Show Us Your... If you have caught a large or unusual fish, send us your photo and share your story.

If you have something you would like to share in the newsletter, please email Chris tennyson.editor@gmail.com

I could swear he is doing it wrong,
but since I dont own a boat, Im
going to keep my opinion to myself!



Safety at Sea

1a Waikawa Marina
Te Ara Kaimoana
Ph (03) 573 8141
email: brmarine@xtra.co.nz
www.beachroadmarine.co.nz



We asked Jon at Beach Road Marine to cover off a few checks you should consider if your boat has not seen much of you over winter.

Let's do the **WOBBLES** (an acronym used in the marine industry): 7 checks for diesel engines

By Jon Brooks – Beach Road Marine

Here are some pre-departure checks that you can safely perform yourself, especially if you are returning to your boat after a break over winter.

WATER

- ✓ Raw water – make sure the seacock is open and the strainer is free of debris with the lid properly sealed (hand-tightened only) water and air tight.
- ✓ Fresh water – check the level and colour of the coolant. Top up if necessary.



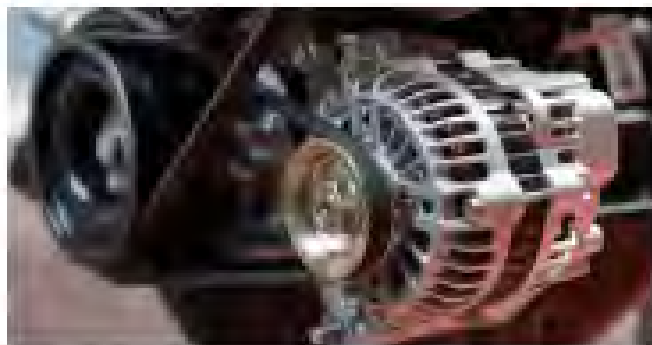
OIL

- ✓ Check the level and top up if necessary. Keep a spare bottle just in case.
- ✓ Keep the oil close to the top mark on the dipstick but **DO NOT** overfill.
- ✓ Check the colour. Diesel engine oil normally becomes quite dark after only a few hours of operation. A milky appearance indicates water ingress. Gearbox oil (or ATF) should not change colour, even towards the end of its lifespan.



BATTERIES

- ✓ Electrical cables should be securely fastened to the battery terminals and free from corrosion and traces of moisture.
- ✓ The battery, or battery box should be securely fastened to the boat to avoid shifting or tipping while underway.



BELTS

- ✓ Check general condition (cracks, worn edges etc).
- ✓ Check tension. Push down on the belt with your thumb in the middle of the longest distance between two pulleys. It should not deflect by more than about 12mm. Slack belts slip and age prematurely.
- ✓ Black dust around the engine room indicates belts are slipping and need tensioning. If they break, your engine will overheat quickly.

Safety at Sea continued

LEAKS

- ✓ Keep your engine room bilge clean to spot leaks easily.
- ✓ Inspect the engine block and hoses, and the bilge underneath, for signs of salt water leaks (rust, corrosion marks, salt crystals) oil or coolant leaks. Trace and fix any found.



EXHAUST / ENGINE

- ✓ Some white smoke upon start up is usually nothing to worry about and should clear as the engine warms up.
- ✓ Stop the engine immediately if you notice:
 - o Black smoke (could indicate injection issues or a blockage in the air intake)
 - o Blue smoke (engine burning oil, can have catastrophic consequences)
 - o Any unusual knocking sounds or excessive engine vibration
- ✓ Check water flow from the exhaust twice – immediately on startup and after a couple of minutes.
- ✓ Allow the engine to warm up so it 'ticks over' smoothly before setting off.

SOUND / SPARES

- ✓ Listen for drops and spikes in the revs (hunting) and screeching sounds (belts slipping). Let your engine warm up gently, do not over rev a cold engine.
- ✓ It is a good idea to carry spare fuel, oil, coolant, filters, belts, impeller and suitable tools

Disclaimer:

While every effort is made to ensure the accuracy of informational articles in this newsletter, we do not accept any responsibility for errors or omissions. The views expressed are not necessarily those of the editor. The TIBC reserves the right to edit or decline articles.

Safety at Sea continued

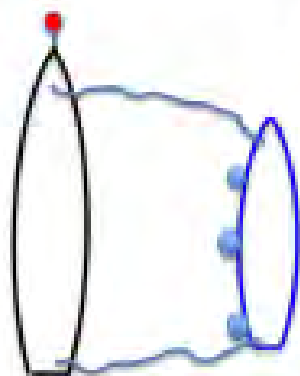
Tips & Tricks

Rafting-up

It is absolutely fantastic to be able to connect with friends or meet new people with the same interest when cruising. You still have your own space, but can share a cockpit 5 o'clock and snacks if you wish, not to mention a game or 3 of cards and plenty of yarns is guaranteed!

You are new to this rafting up thing - what on earth are they talking about...

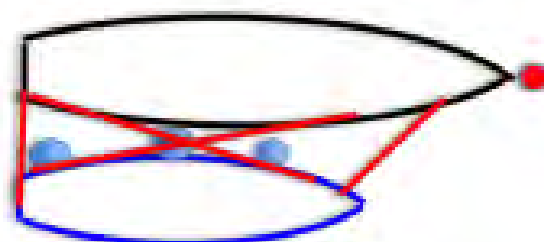
This is where you see two or more boats tied to each other either attached to a mooring or anchored with a stern line.



It's not difficult as long as you take it slowly, practice and be prepared by getting your fenders and lines (ropes) out well in advance and tied to your cleats - remember to take the long end (the end you will be throwing to the other boat) under your life lines or rails before bringing them back onboard over the top. It is a good idea to ask the boat you will raft up to which side they want you to tie to.

This diagram on the left shows the boat on a mooring (black) and the boat rafting up (blue) with its fenders well positioned and bow and stern line already thrown across. In a perfect world you will be able to stop alongside and pull yourself into the black boat (once they have tied off your lines) and then tie off your spring lines (the diagonal ones running bow to stern crossing over in the middle - these lines stop back and forward movement)

Remember slow and steady is the only way to approach the moored boat, this still gives you control and ability to fend off if necessary without harm to either boat or human. NEVER ever put your hand or foot between the boats, it is very easy to get caught with the offending appendage painfully crushed.



The main idea is for the largest boat to have the mooring and other boats tie off to it.

Key Points:

- In windy conditions it may not be suitable to raft up given each boat will move according to its own weight and damage can occur especially if waves or ferry wash for example is likely.
- Be sure to ask to raft-up and do not attempt this if no one is onboard the other boat.
- When rafting up two yachts together ensure the spreaders are not directly in line, stagger the boats by adjusting the spring lines to offset the spreaders.

BLUE SAFARI CHARTERS



CRUISE WALK THE SOUNDS 19th November 2022

We will not be doing the usual walk on the Wilson Bay farm to TeRawa as sadly the Foots have had huge damage on the track and have had to close the walk until further notice. Our thoughts go out to Trevor and Kelly. Fortunately for them the Cottages are open.

We will advise the details for a new walk/cruise closer to the time.

Reserve your place now.

John Hebbard/Beryl Archer 027 4321165 berylarcher@xtra.co.nz



We would like to thank all the members, advertisers, and supporters for all your hard work and support to make the newsletter go ahead.

Rural Connectivity Group Build Plan for Tennyson Inlet

21 September 2022

The Rural Connectivity Group (RCG) have achieved the DOC Concession and RMA approval for the cell site to provide much needed and long-awaited services to the residents of Tennyson Inlet and Penzance Bay.

The RCG are planning to commence build of the Tennyson Inlet cell site and the Waiona Bay cell site in early November 2022. The build crew require good weather with the ground conditions dried out so it is safe for our team to access these two steep locations with the equipment.

RCG have just been granted access to the Elaine Bay Road that has been closed to heavy traffic due to the bad damage caused by recent flooding. This will allow for a digger to be able to clean up the access track to the Tennyson Inlet cell site location. This is a big step forward in the build programme and provides certainty to the early November build commencement date.

The Tennyson Inlet cell site is reliant on the Waiona Bay cell site to receive its critical backhaul (backhaul is the critical transmission linking into the national telecommunications fibre network which enables the cell site to operate). To achieve the backhaul, the Tennyson Inlet cell site is linked to the Waiona Bay cell site via digital microwave radio, which is then linked to the RCG cell site at Croisilles French Pass Road, which in turn links to the RCG Okiwi Bay cell site. The Okiwi Bay cell site is connected to fibre backhaul which provides all four RCG cell sites access to the national telecommunications network.

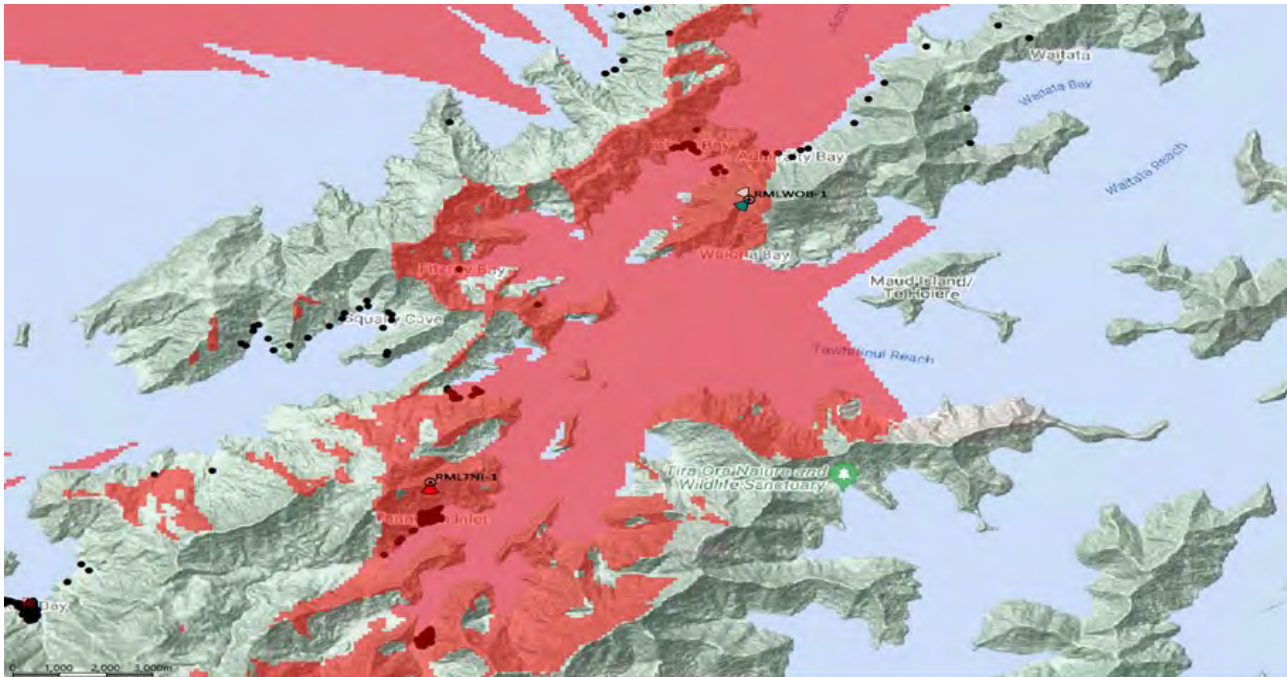
RCG Backhaul Linking Path of the Four Sites



The RCG cell sites at Okiwi Bay and Croisilles French Pass Road are built and operational with the Waiona Bay and Tennyson Inlet sites being the last two in this backhaul daisy chain allowing 4G mobile and wireless broadband coverage into these parts of the Sounds. It has been technically challenging to find a robust solution to deliver the connectivity and RCG acknowledge the patience and keenness of the community to finally be provided with services.

Rural Connectivity Group Build Plan for Tennyson Inlet

Predicted 4G Wireless Broadband Coverage From Waiona Bay and Tennyson Inlet Sites



RMLWOB and RMLTNI Coverage
 ■ RCG Broadband Service
 ● RCG EEU

Rural Wireless Broadband services will be available from Spark, Vodafone and 2degrees, along with their wholesale partners who resell off these networks. This is the opportunity to investigate the available 4G wireless broadband plans as most providers have the rural wireless broadband plan details on their websites.

When these sites are live and you have chosen your plan and provider, your provider will send you a router and provision your account to provide you with broadband. Please read the attached Information Sheet about 4G Voice Calling Services to ensure you have a 4G voice calling capable mobile phone by the time services are available. Please work with your mobile provider to understand the requirements of 4G Voice Calling – once again the website details are in the Information Sheet.

RCG thank the community for their ongoing support to get this network scoped and designed. RCG predict the build to proceed smoothly in the appropriate weather conditions and look forward to switching the cell sites on by Christmas 2022.

Caitlin Metz
 Engagement Manager
 Phone 021 033 1116
Caitlin.Metz@theRCG.nz

Rural Connectivity Group | 111 Franklin Road | Auckland 1010 | New Zealand
 PO Box 192 | Shortland Street | Auckland 1140 | New Zealand

Tennyson Inlet RCG



**Rural
Connectivity
Group**

**4G Wireless
Broadband and
Mobile calling services
information sheet**



The Rural Connectivity Group is building a new telecommunications site here - connecting you to the rest of New Zealand's mobile network.

www.thercg.nz

Tennyson Inlet RCG



Important information about this new 4G coverage

The RCG network is providing 4G wireless broadband and VoLTE mobile calling from Spark, Vodafone and 2degrees. To be able to use this coverage for voice services, there may be some things you'll need to do.

About this 4G RCG site

The RCG, a joint venture between Spark, Vodafone and 2degrees is aiming to build over 500 mobile sites to provide wireless broadband connectivity in rural areas. With this comes new 4G only mobile coverage in these areas. This work is part of the second phase of the Rural Broadband Initiative (RBI2) or funded through the Provincial Growth Fund.

To provide as much coverage as possible to kiwis across rural New Zealand, sites are mostly 4G only – because historically calls have worked over the 3G network, some mobile phones will not be able to make traditional voice calls whilst connected to a 4G only cell site. To use voice services in 4G only coverage areas, a VoLTE capable mobile phone is required.

What is VoLTE?

VoLTE, or voice over LTE (the technical name for 4G), is the next evolution of mobile calling that uses the 4G network for mobile voice calls. For the past decade, voice calls have been primarily carried out over the 3G network. So, while you may have a 4G capable phone and be able to see service bars on your phone, it might not be capable of voice calling over 4G. Most 4G capable phones however, can use data and SMS in these areas so apps such as WhatsApp and Skype can be used to make calls over data.

How can I get VoLTE?

VoLTE capable phones vary depending on which provider's network you are using.

To find out whether your phone is VoLTE capable and how to enable it, visit:

Spark: www.spark.co.nz/help/mobile/understand/voLTE/

Vodafone: www.vodafone.co.nz/our-networks/voLTE/

2degrees: www.2degrees.nz/help/mobile/help/calling/features/find-out-about-voLTE

Skiny: www.skiny.co.nz/voLTE

For more information, contact your service provider:

Spark: www.spark.co.nz/ or call 0800 323 232

Vodafone: www.vodafone.co.nz/ or call 0800 800 021

2degrees: www.2degrees.nz/ or call 0800 022 022

Skiny: www.skiny.co.nz/ or call 0800 475 4669

Club Merchandise Available to Order

To order:

Email Glenda info@capitall.co.nz or phone (03) 546 8030

1. Request logo for TIBC / Tennyson Inlet Boat Club
2. Include all contact details including shipping address or IF you will collect:
207 Akersten Street, Port Nelson
3. Include style #, colour, size and quantity
4. If for delivery then freight is chargeable. Terms strictly 20th of the month following, payable to Capitall Promotions Ltd per the invoice they will provide

Men's, Ladies and Children's 100% Cotton T-shirts



\$16.10 incl GST



| | Style # | Sizes | Colours & More Information |
|-----------------|---------|--------------|---|
| Men's | T10012 | S - 3XL, 5XL | https://www.bizcollection.com.au/product/nz/t10012/ |
| Ladies | T10022 | 6 - 24 | https://www.bizcollection.com.au/product/nz/t10022/ |
| Children | T10032 | 2 - 16 | https://www.bizcollection.com.au/product/nz/t10032/ |

Club Merchandise Available to Order

Men's & Ladies Summit Jacket



Colours



Black/Graphite



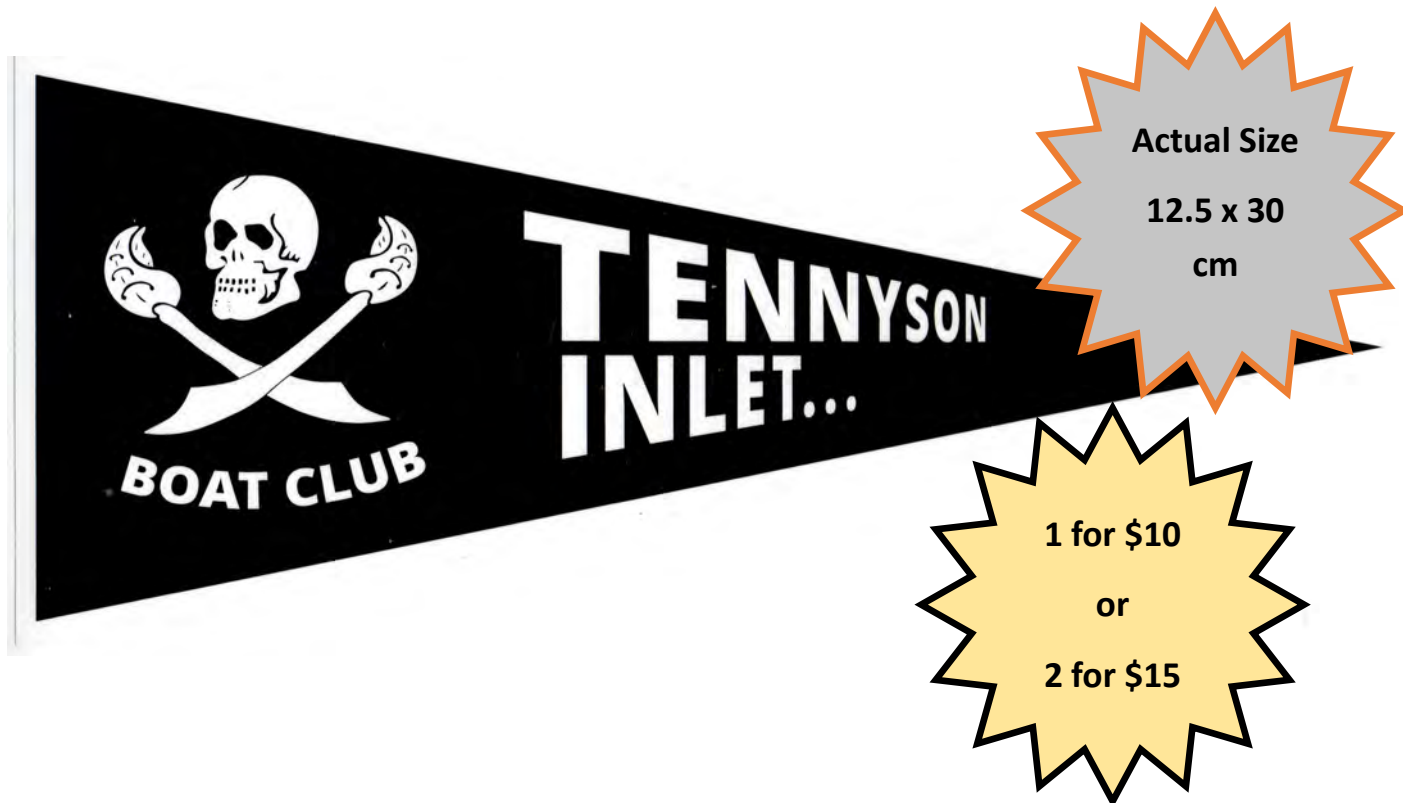
Navy/Graphite

\$116.15 incl GST

| | Style # | Sizes | More Information |
|--------|---------|--------------|---|
| Men's | J10910 | S - 3XL, 5XL | https://www.bizcollection.com.au/product/nz/j10910/ |
| Ladies | J10920 | S - 2XL | https://www.bizcollection.com.au/product/nz/j10920/ |

TIBC Vinyl Stickers for Sale

For your boat, kayak, paddleboard, tractor, vehicle or trailer



To order:

Duncan Bay—phone Pete 03 576 5667 to collect from 19 Nikau Street

Penzance Bay—email Leanne nowonplanb@gmail.com or phone 03 576 5111 to collect from 3163 Archers Road

Events 2022



| | | |
|----------------|--|--|
| March 2022 | 5 th March Committee Meeting | |
| April 2022 | Newsletter 1 | <i>Read the Captain's Log for an update on what the Committee discussed.</i> |
| August 2022 | 13 th August Committee Meeting | |
| September 2022 | Newsletter 2 | <i>Read the Captain's Log for an update on what the Committee discussed.</i> |
| October 2022 | 15 th October Committee Meeting | |
| December 2022 | 3 rd December Committee Meeting | |
| December 2022 | Newsletter 3 | <i>Read the Captain's Log for an update on what the Committee discussed.</i> |
| December 2022 | 27 th December TIBC AGM in Penzance | |
| January 2023 | 2 nd January Annual Picnic Day | |

Children's Corner

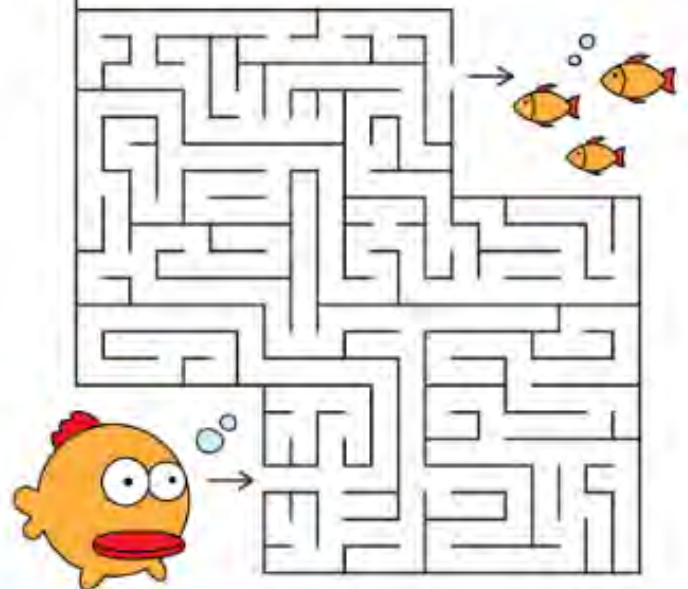
Can you find the fish names in this wordfind?



| | | | | | | | | | |
|---|---|---|---|---|---|---|---|---|---|
| S | E | A | H | O | R | S | E | S | V |
| K | O | W | R | O | C | P | T | E | I |
| A | N | T | M | F | R | O | A | T | H |
| T | R | U | M | P | E | T | E | R | I |
| E | A | S | N | I | K | T | M | L | K |
| N | C | E | L | G | S | Y | I | P | A |
| S | O | L | E | F | U | S | E | S | R |
| M | T | U | N | I | K | O | M | U | E |
| J | O | C | K | S | T | U | A | R | T |
| E | K | R | A | H | S | L | T | K | S |

- | | |
|-------------|-----------|
| Jock Stuart | Skate |
| Moki | Spotty |
| Pigfish | Sole |
| Seahorse | Terakihi |
| Shark | Trumpeter |

Maze Game



WORD PUZZLE GAME

| | | | | | | | | | | |
|---|---|---|---|---|---|---|---|---|---|---|
| G | S | H | R | U | S | H | A | R | K | H |
| A | C | L | I | J | X | K | T | A | N | A |
| W | N | O | M | E | O | P | U | N | C | D |
| O | F | A | P | L | D | A | J | O | F | O |
| L | I | O | M | L | Y | F | I | S | H | L |
| C | S | C | S | U | W | L | E | A | D | P |
| Y | H | T | U | M | H | A | O | N | I | H |
| S | T | O | P | A | U | X | M | L | A | N |
| E | A | H | O | S | T | T | L | E | Q | T |
| I | B | A | R | M | U | R | K | O | P | B |
| T | P | O | S | E | M | A | T | C | R | A |